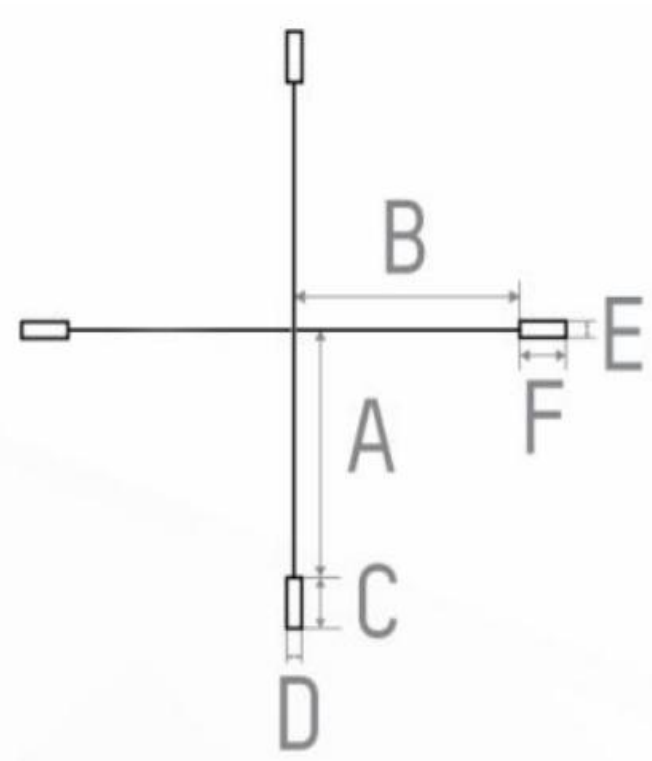


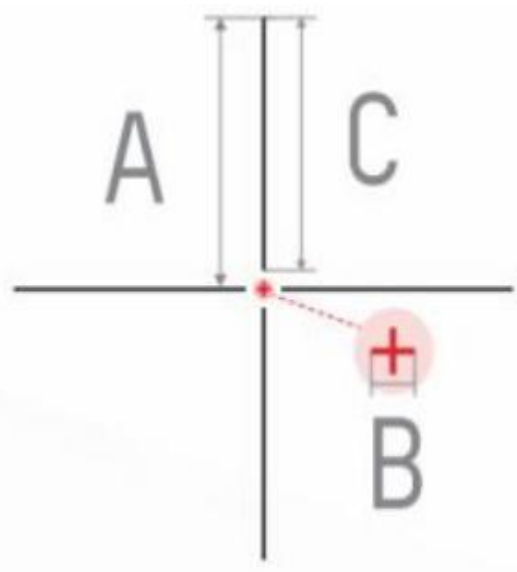
KECK KE35 Thermal RifleScope 10 Types of Reticle

Reticle 1



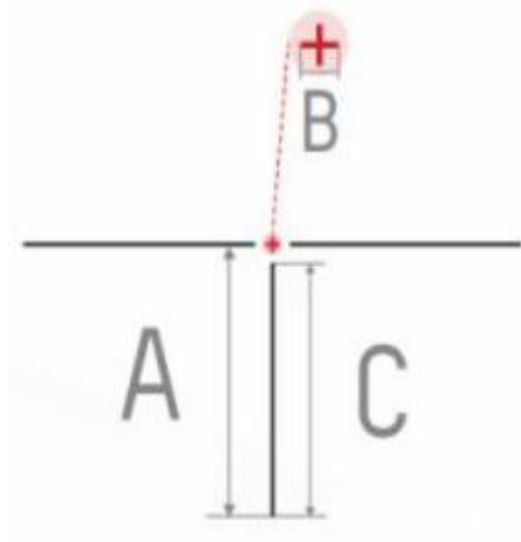
Reticle parameters	MOA	cm@100m
(for 1x magnification)		
Section A	82.7	239.8
Section B	82.7	239.8
Section C	16.5	48
Section D	4.7	13.7
Section E	4.7	13.7
Section F	16.5	48

Reticle 2



Reticle parameters	MOA	cm@100m
(for 1x magnification)		
Section A	98.4	285.4
Section B	7.1	20.6
Section C	92.1	267.2

Reticle 3



Reticle parameters

(for 1x magnification)

Section A

Section B

Section C

MOA

cm@100m

98.4

285.4

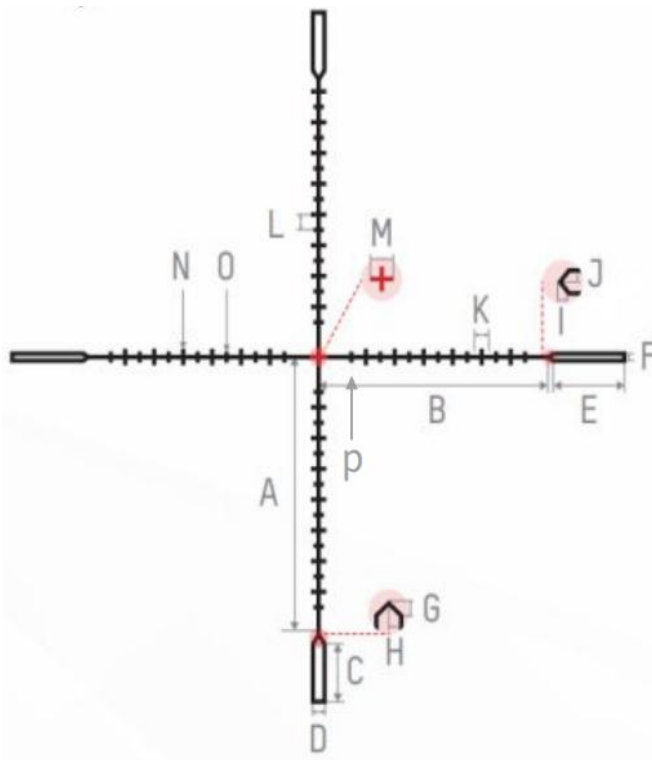
7.1

20.6

92.1

267.2

Reticle 4



Reticle parameters

(for 1x magnification)

Section A

Section B

Section C

Section D

Section E

Section F

Section G

Section H

Section I

Section J

Section K

Section L

Section M

Section N

Section O

Section P

MOA

cm@100m

77.2

223.8

70.1

203.2

16.5

48.0

3.9

11.4

22.0

63.9

2.4

6.9

2.4

6.9

2.4

6.9

1.6

4.6

1.6

4.6

3.1

9.1

3.1

9.1

0.0

0.0

7.9

22.8

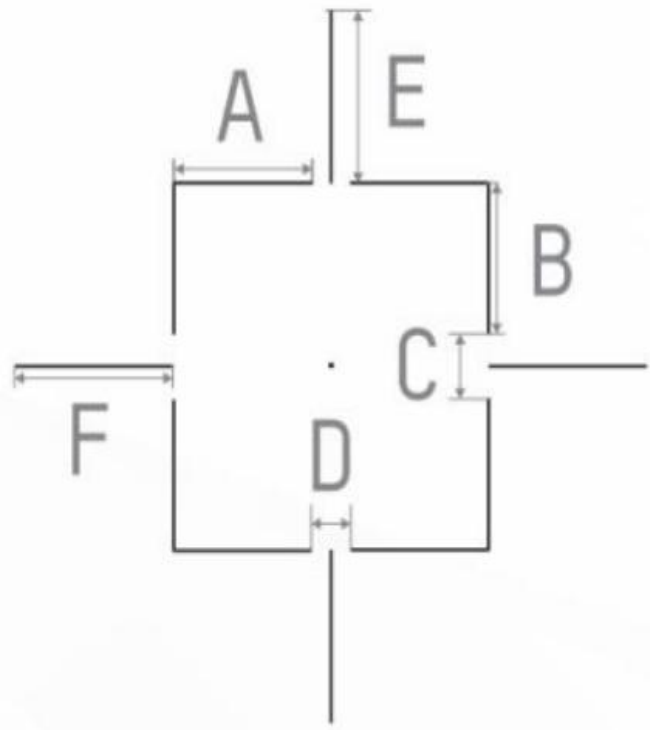
3.9

11.4

11.0

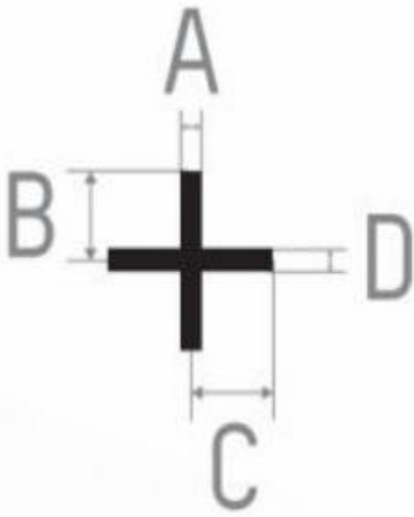
32.0

Reticle 5



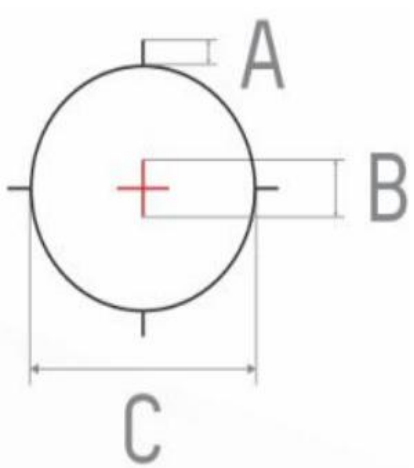
Reticle parameters (for 1x magnification)	MOA	cm@100m
Section A	5.5	16
Section B	5.5	16
Section C	3.9	11.4
Section D	2.4	6.9
Section E	6.3	18.3
Section F	6.3	18.3

Reticle 6



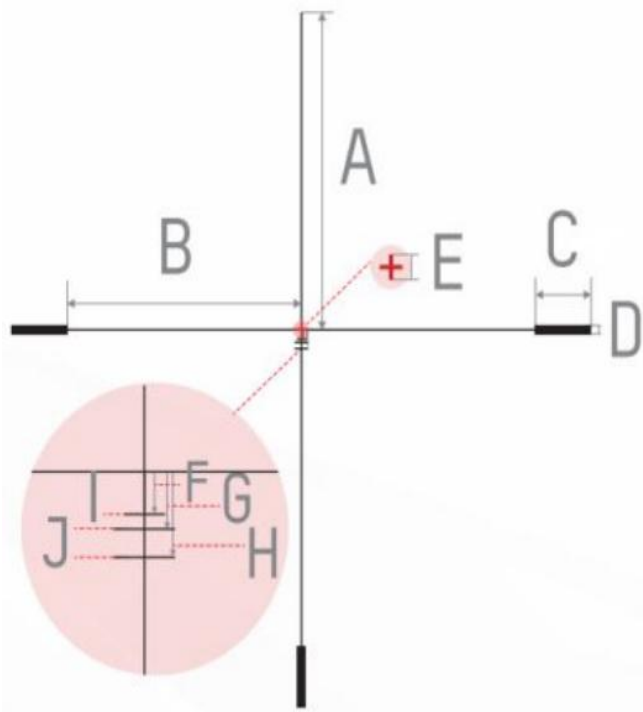
Reticle parameters (for 1x magnification)	MOA	cm@100m
Section A	1.6	4.6
Section B	4.7	13.7
Section C	4.7	13.7
Section D	1.6	4.6

Reticle 7



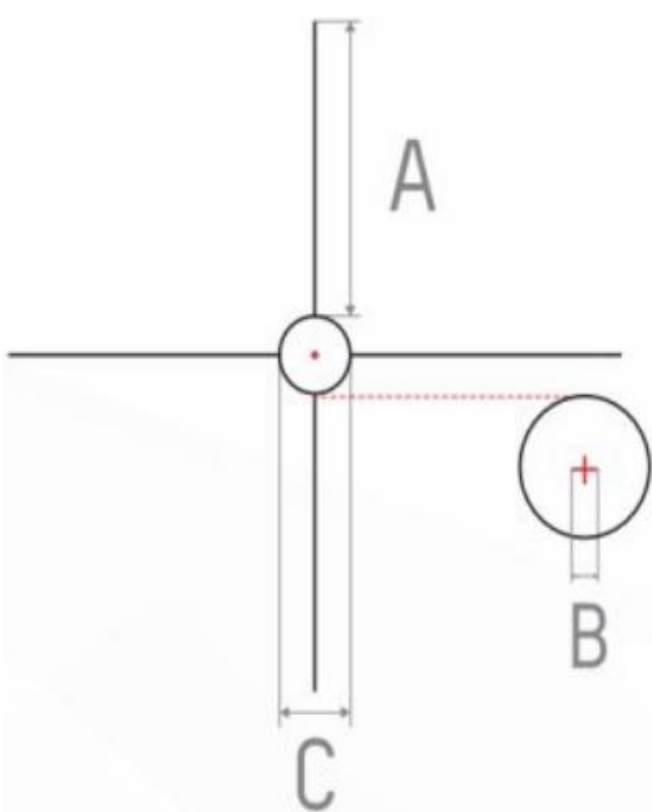
Reticle parameters (for 1x magnification)	MOA	cm@100m
Section A	2.4	6.9
Section B	4.7	13.7
Section C	23.6	68.5

Reticle 8



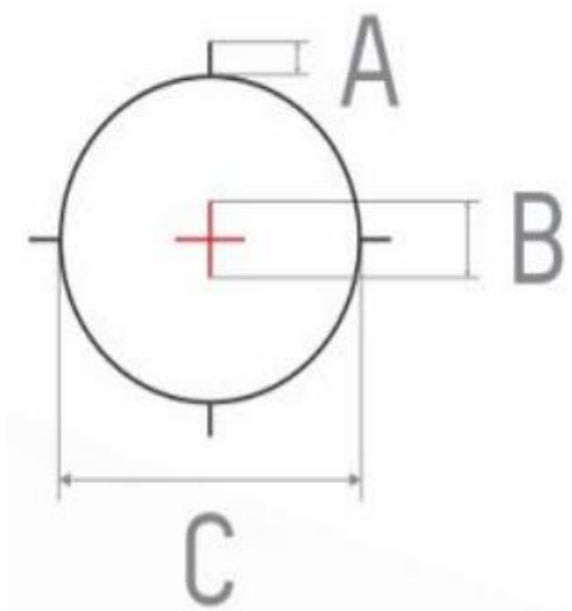
Reticle parameters (for 1x magnification)	MOA	cm@100m
Section A	95.3	276.3
Section B	76.4	221.5
Section C	18.9	54.8
Section D	2.4	6.9
Section E	0	0
Section F	3.1	9.1
Section G	5.5	16
Section H	7.9	22.8
Section I	2.4	6.9
Section J	3.9	11.4

Reticle 9



Reticle parameters (for 1x magnification)	MOA	cm@100m
Section A	87.4	253.5
Section B	4.7	13.7
Section C	22.8	66.2

Reticle 10



Reticle parameters (for 1x magnification)	MOA	cm@100m
Section A	2.4	6.9
Section B	4.7	13.7
Section C	23.6	68.5